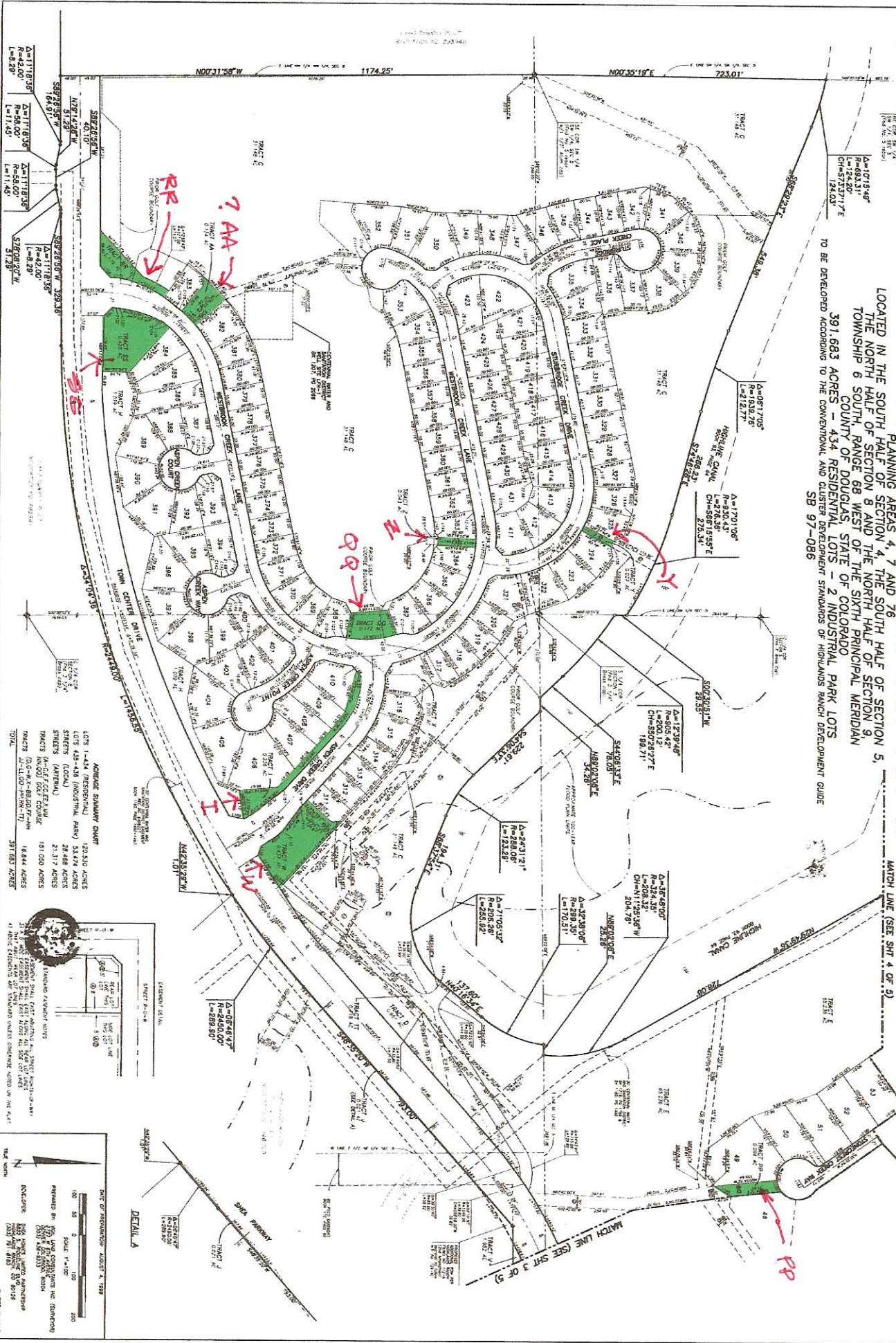


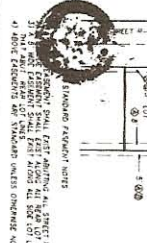
HIGHLANDS RANCH - FILING NO. 134-A

PLANNING AREAS 4, 7 AND 76
 LOCATED IN THE SOUTH HALF OF SECTION 4, THE SOUTH HALF OF SECTION 5,
 THE NORTH HALF OF SECTION 8 AND THE NORTH HALF OF SECTION 9
 TOWNSHIP 6 SOUTH, RANGE 68 WEST OF THE SIXTH PRINCIPAL MERIDIAN
 COUNTY OF DOUGLAS, STATE OF COLORADO
 391.683 ACRES
 434 RESIDENTIAL LOTS - 2 INDUSTRIAL PARK LOTS
 TO BE DEVELOPED ACCORDING TO THE CONVENTIONAL AND LATER ESTABLISHED STANDARDS OF HIGHLANDS RANCH DEVELOPMENT GUIDE
 SB 97-086



AGRICULTURE SUMMARY CHART

LOTS 1-44 (RESIDENTIAL)	120.50 ACRES
LOTS 45-48 (INDUSTRIAL PARK)	28.48 ACRES
STREETS (LOCAL)	21.17 ACRES
STREETS (ARTERIAL)	191.00 ACRES
TRACTS (C&G) (C&G)	18.44 ACRES
TRACTS (C&G) (C&G)	387.80 ACRES
TOTAL	391.683 ACRES



DETAIL A

SCALE: 1" = 100'

DATE OF PREPARATION: AUGUST 4, 1998

PREPARED BY: [Firm Name]

REVISIONS:

- NO. 1: [Description]
- NO. 2: [Description]
- NO. 3: [Description]
- NO. 4: [Description]
- NO. 5: [Description]
- NO. 6: [Description]
- NO. 7: [Description]
- NO. 8: [Description]
- NO. 9: [Description]
- NO. 10: [Description]

SHEET 2 OF 3