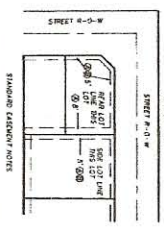
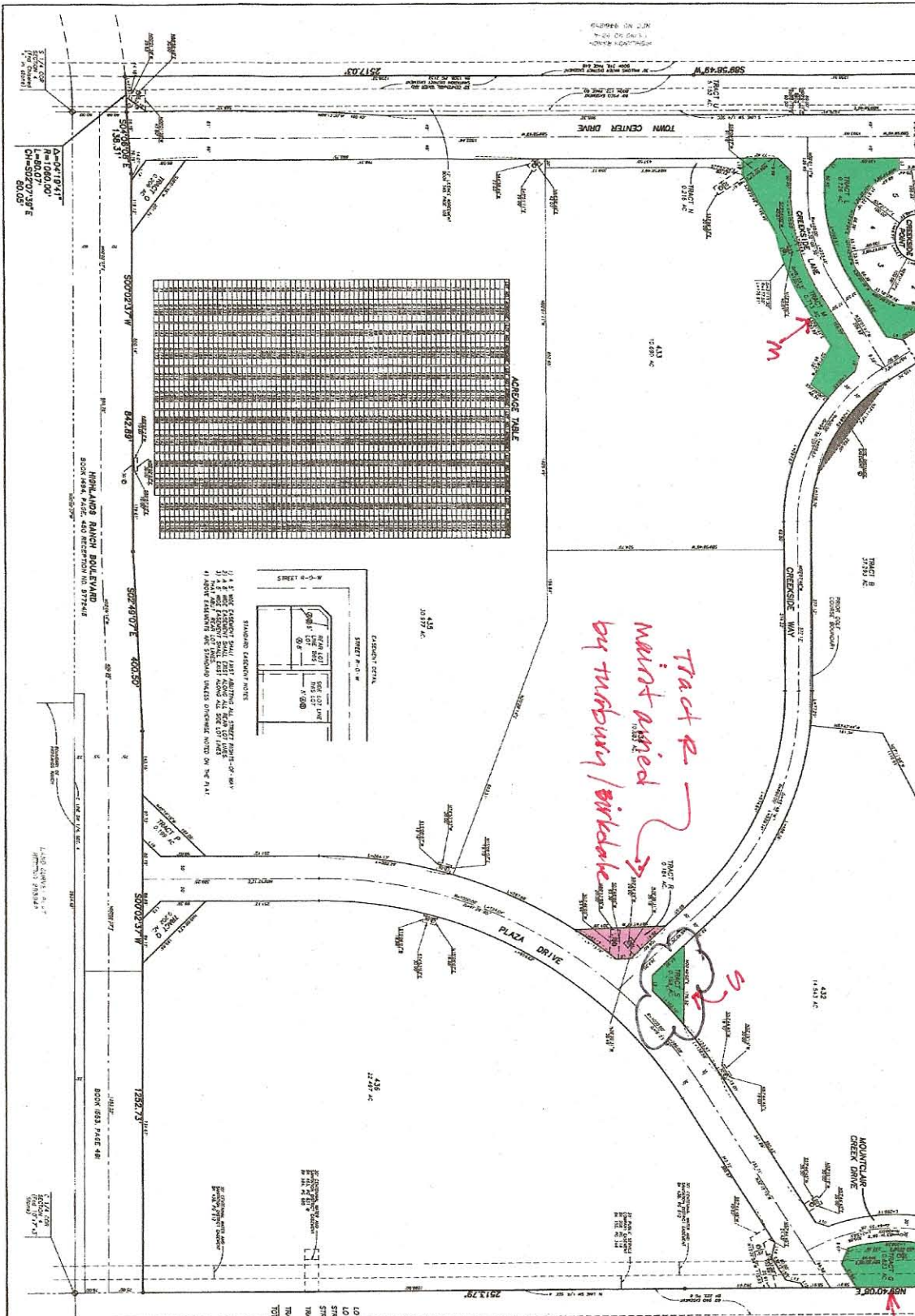


# HIGHLANDS RANCH - FILING NO. 134-A

LOCATED IN THE SOUTH HALF OF SECTION 4, 7 AND 76  
 THE NORTH HALF OF SECTION 8 AND THE NORTH HALF OF SECTION 9,  
 TOWNSHIP 6 SOUTH, RANGE 68 WEST OF THE SIXTH PRINCIPAL MERIDIAN  
 COUNTY OF DOUGLAS, STATE OF COLORADO  
 391.683 ACRES - 434 RESIDENTIAL LOTS  
 TO BE DEVELOPED ACCORDING TO THE CONCEPTUAL AND PRELIMINARY DEVELOPMENT GUIDE  
 SB 97-086



ACRES SUMMARY CHART

LOTS 1-434 (RESIDENTIAL)	120,350 ACRES
LOTS 435-438 (INDUSTRIAL PARK)	53,174 ACRES
STREETS (LOCAL)	28,488 ACRES
STREETS (ARTERIAL)	21,517 ACRES
TRAILS (MOUNTAIN CREEK DRIVE)	151,550 ACRES
TRAILS (S-CREEK DRIVE)	14,844 ACRES
TOTAL	377,923 ACRES

DATE OF PREPARATION: MARCH 4, 1988

SCALE: 1"=100'

PREPARED BY: WEA, INC. CONSULTING AND ENGINEERING  
 10000 W. 10TH AVENUE, SUITE 1000  
 DENVER, COLORADO 80202

EXCLUDED: SEE EXHIBIT 1, ATTACHED HERETO  
 (SEE EXHIBIT 1, ATTACHED HERETO)

SHEET 2 OF 3