



**DOWNING
THORPE
JAMES**

ARCHITECTURE
PLANNING
LANDSCAPE ARCHITECTURE
ENGINEERING
1881 Ninth Street, Suite 103
Boulder, Colorado 80302
303-443-7533

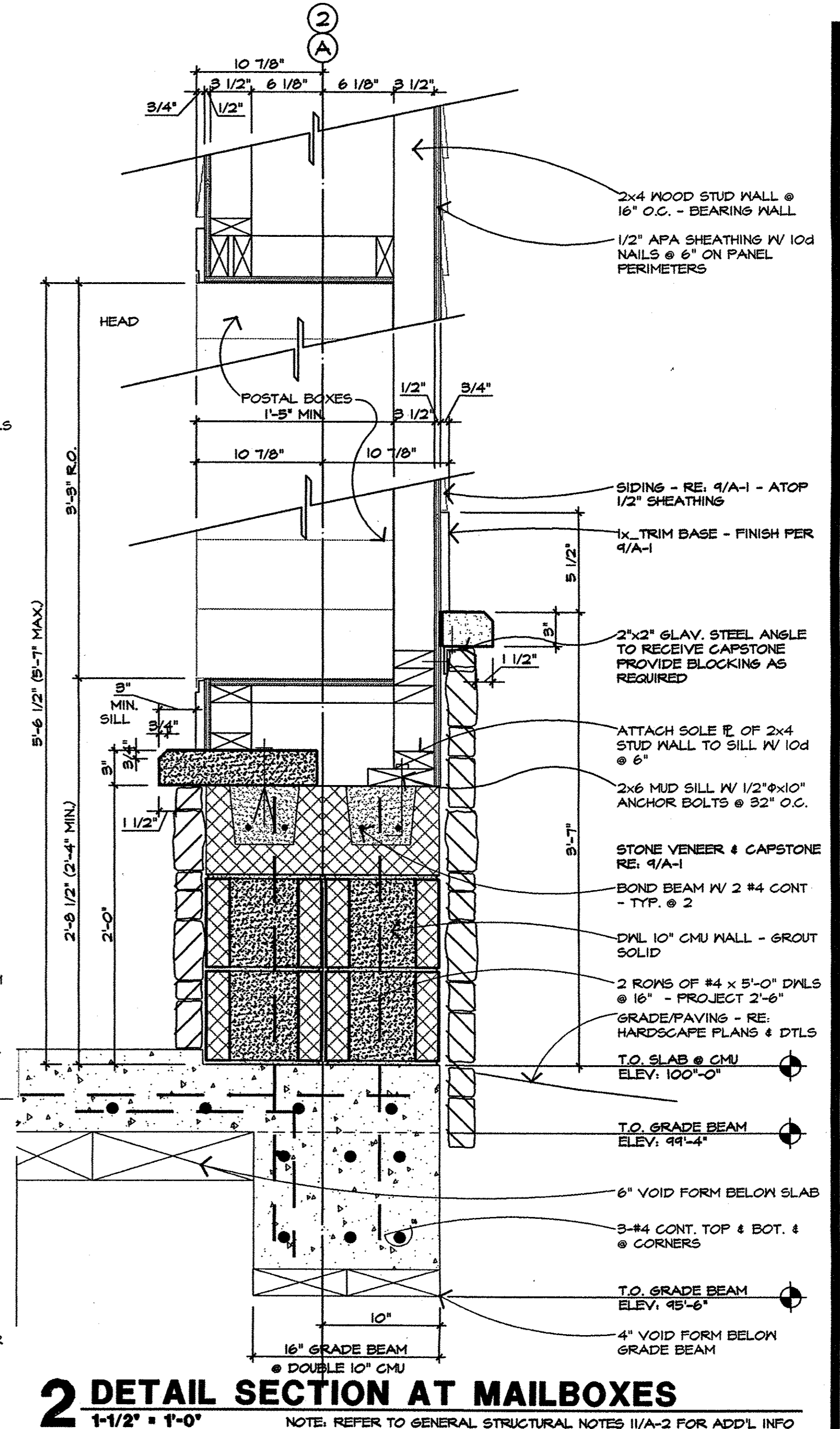
HIGHLANDS RANCH
GOLF CLUB

SCALE: AS SHOWN
DRAWN BY: MEN
CHECKED BY: DTJ
PROJECT NUMBER: 97048.41
ISSUE DATE: July 10, 1998
REVISIONS: August 26, 1998

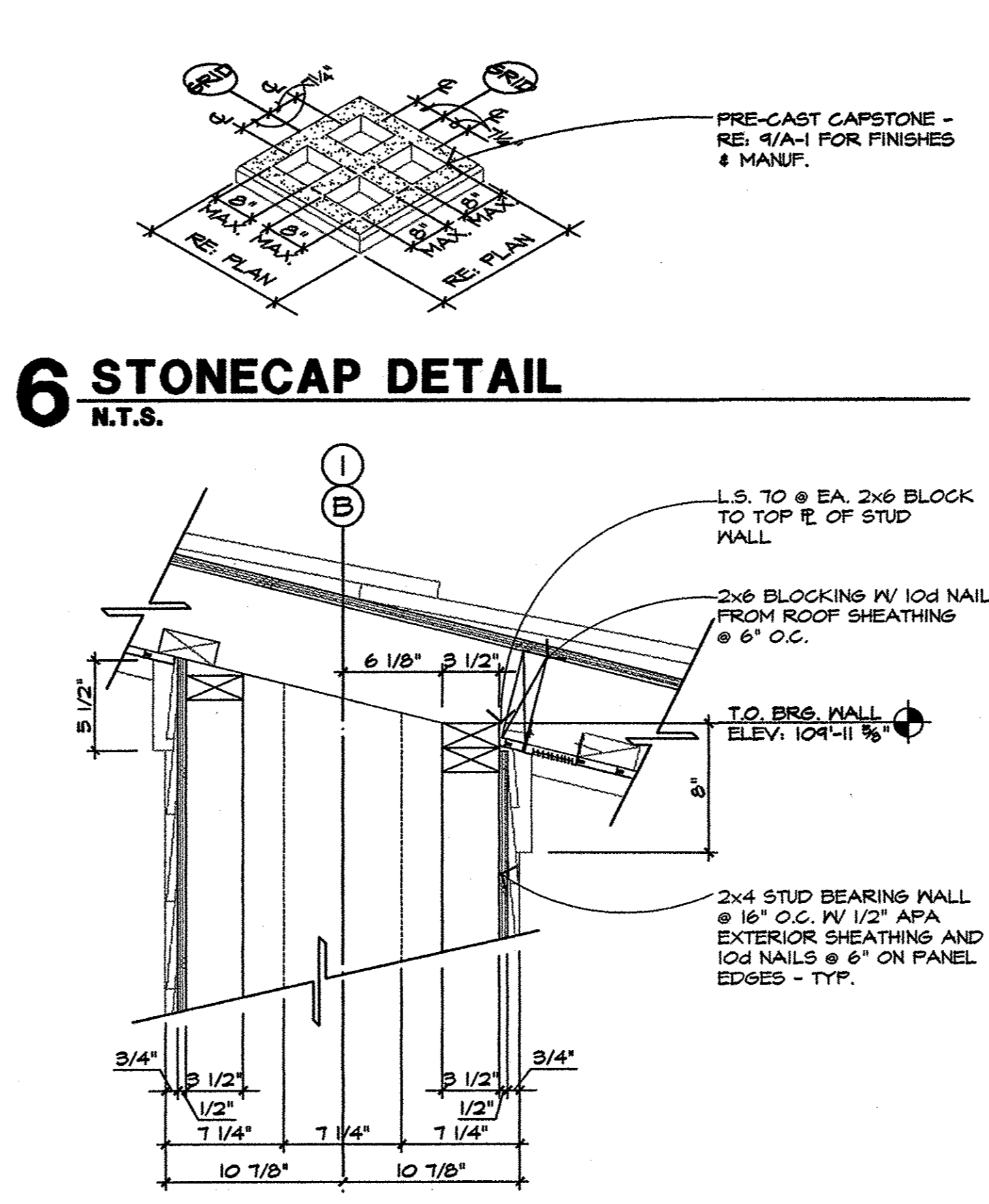
SHEET TITLE:
POSTAL CENTER
DETAILS
SHEET NUMBER:

A-4

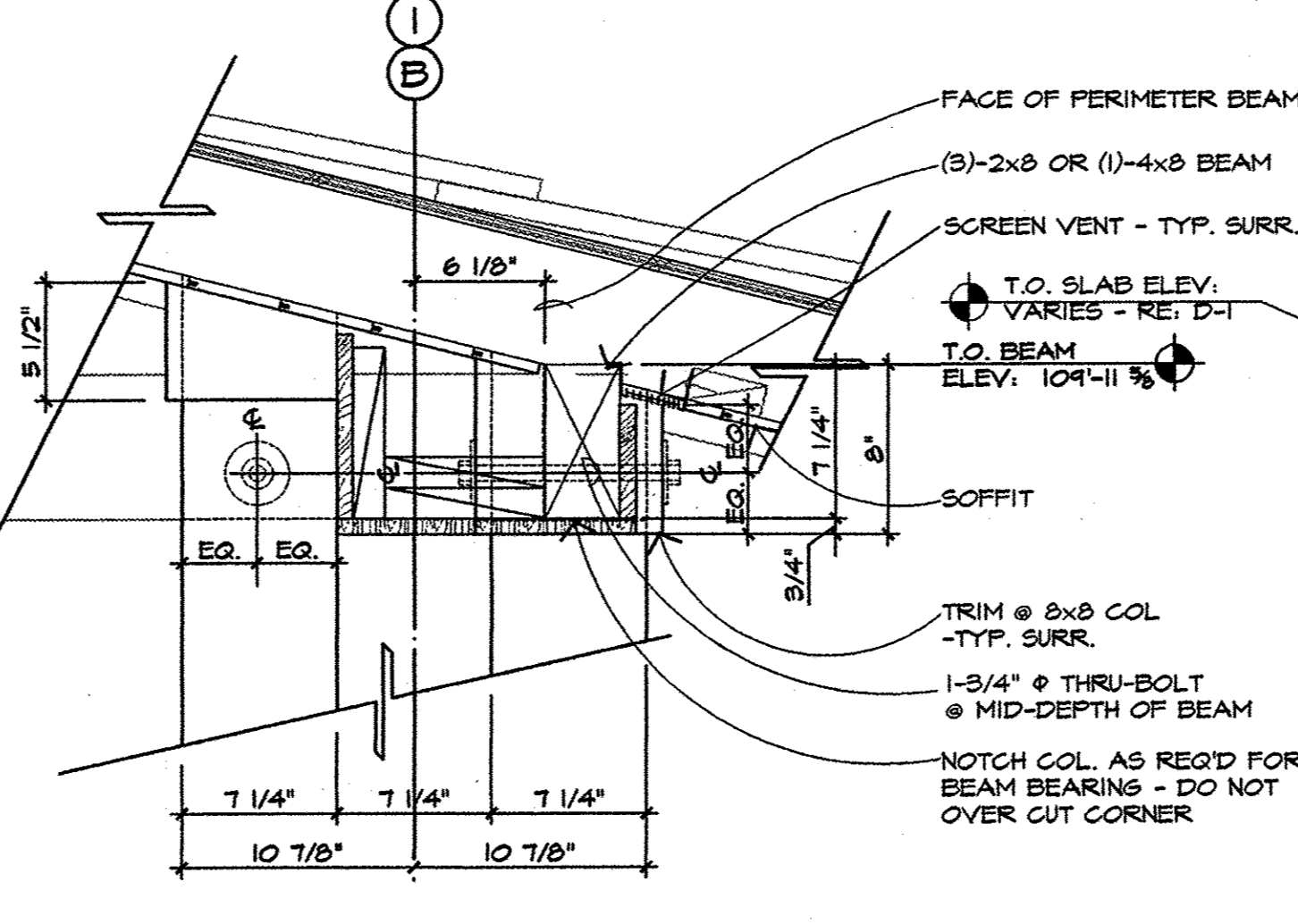
BID DOCUMENTS



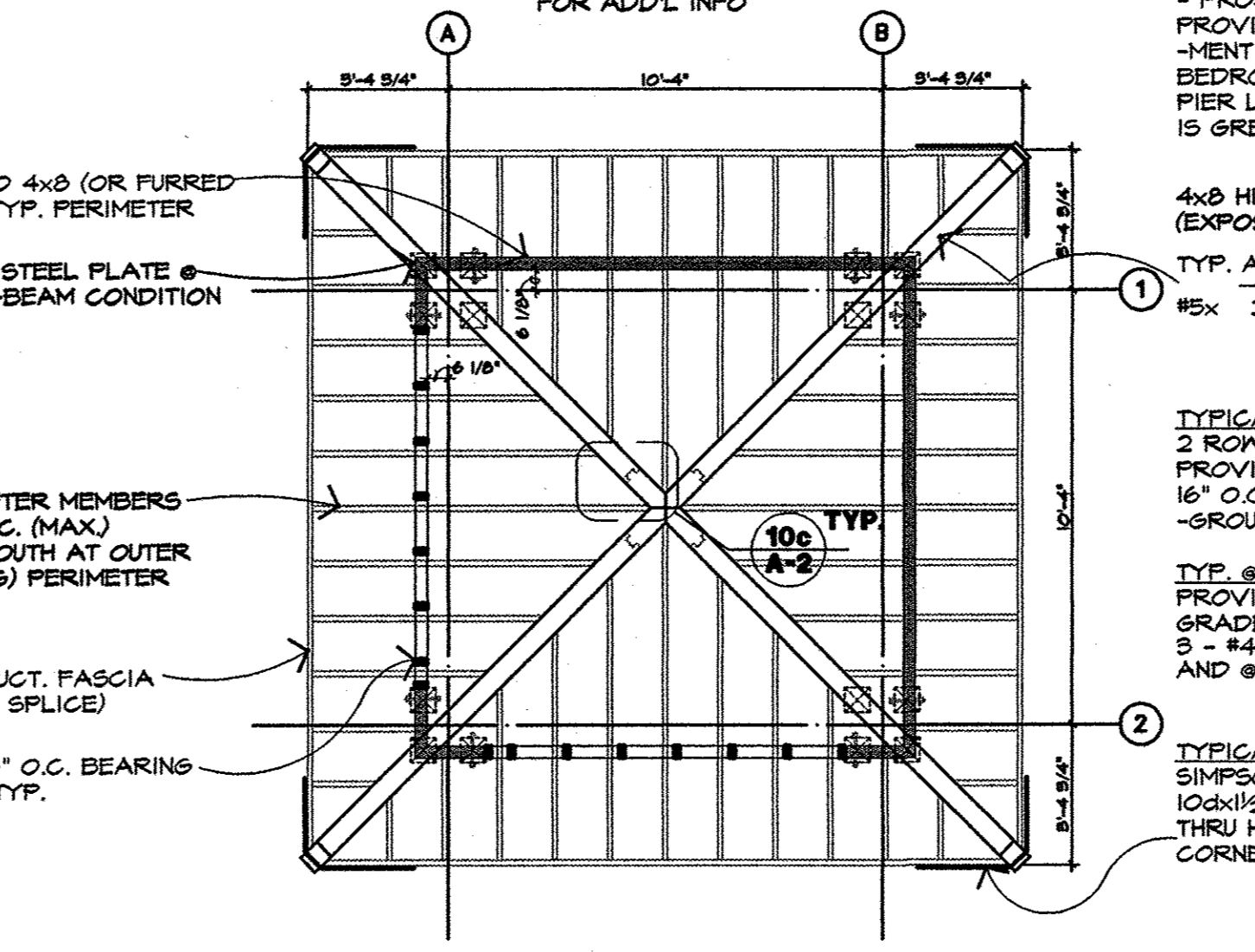
2 DETAIL SECTION AT MAILBOXES
1-1/2" x 1'-0"
NOTE: REFER TO GENERAL STRUCTURAL NOTES 11/A-2 FOR ADD'L INFO



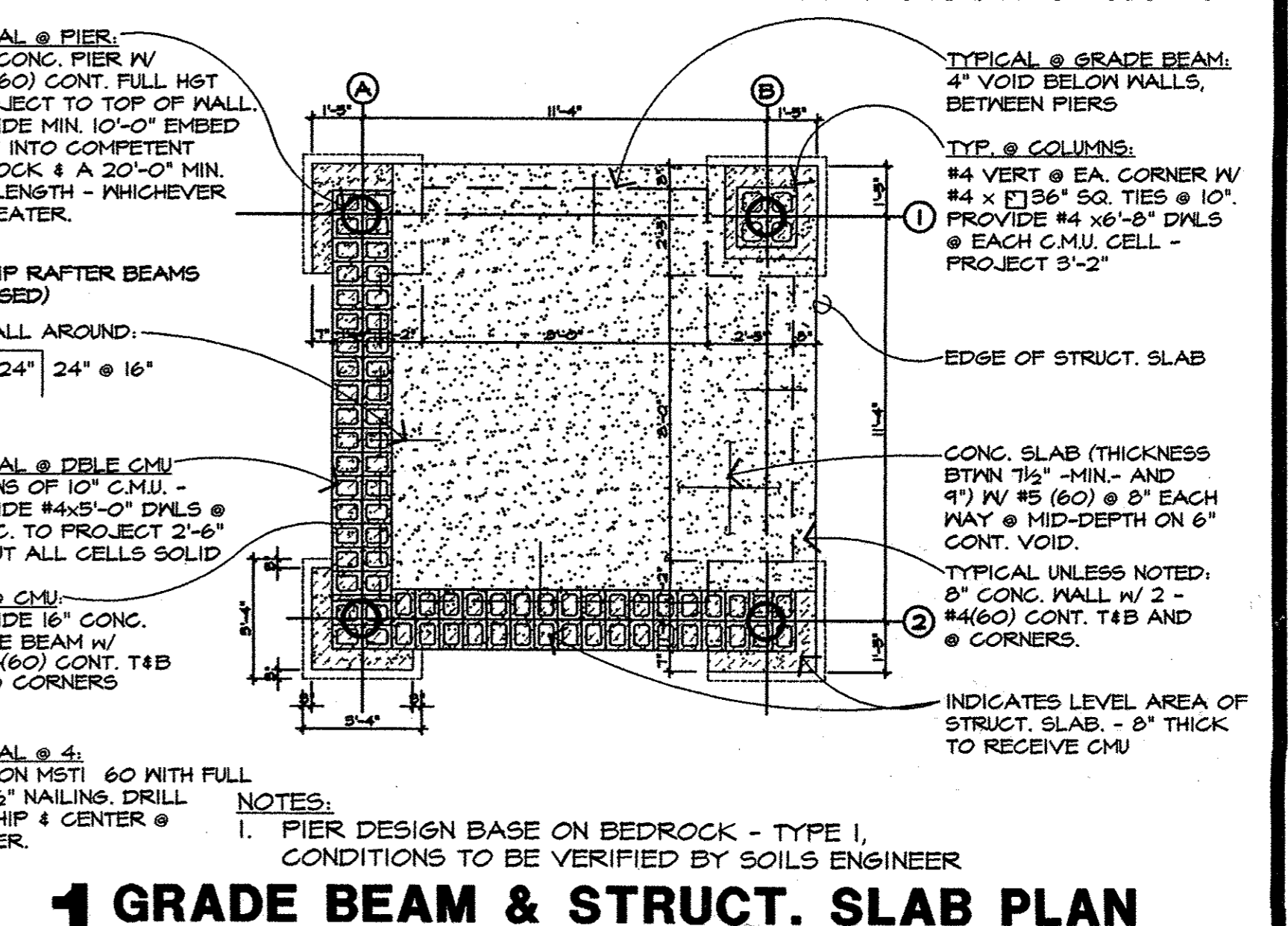
6 STONECAP DETAIL
N.T.S.



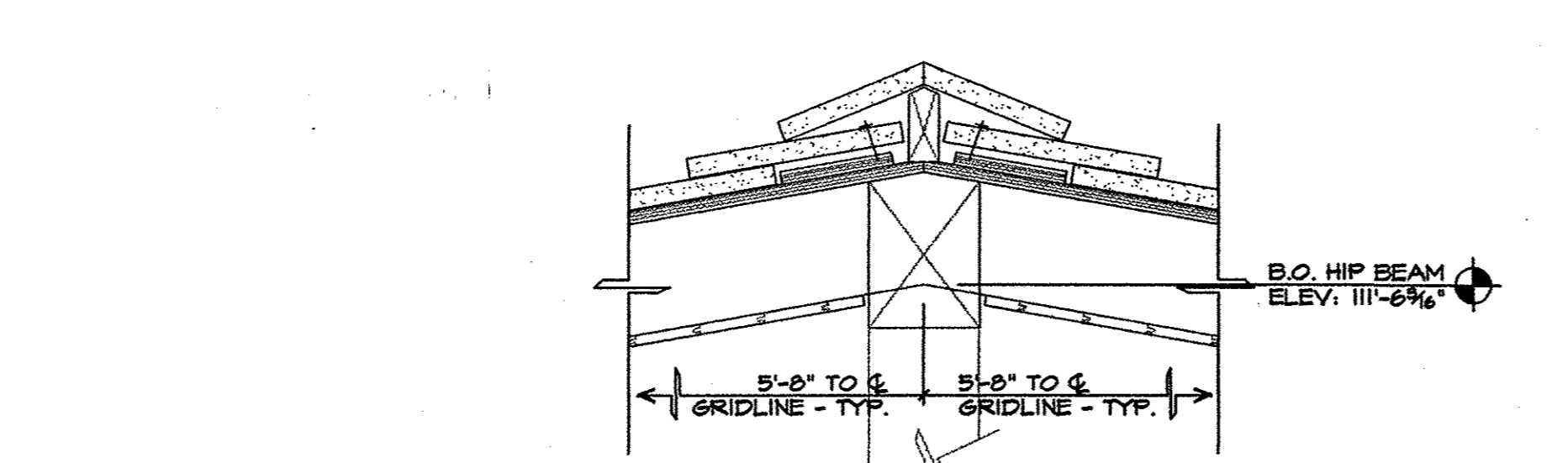
5 SECTION DETAIL
1-1/2" x 1'-0"
RE: 4/A-4 FOR TYP. CALLOUTS AND NOTES



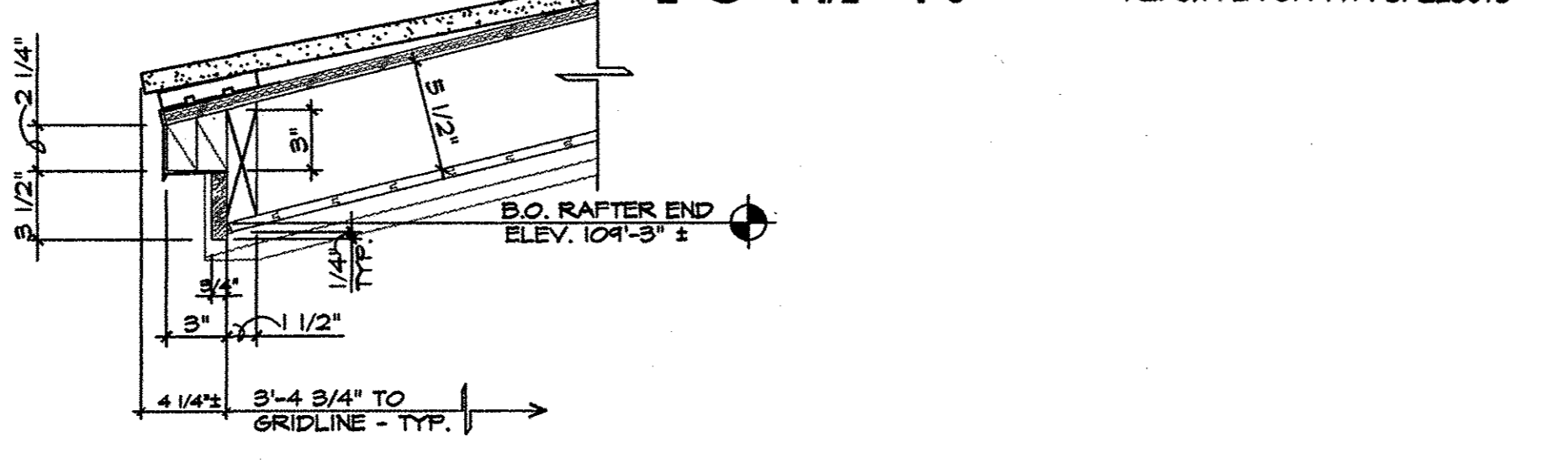
4 SECTION DETAIL
1-1/2" x 1'-0"
NOTE: REFER TO GENERAL STRUCTURAL NOTES 11/A-2 FOR ADD'L INFO



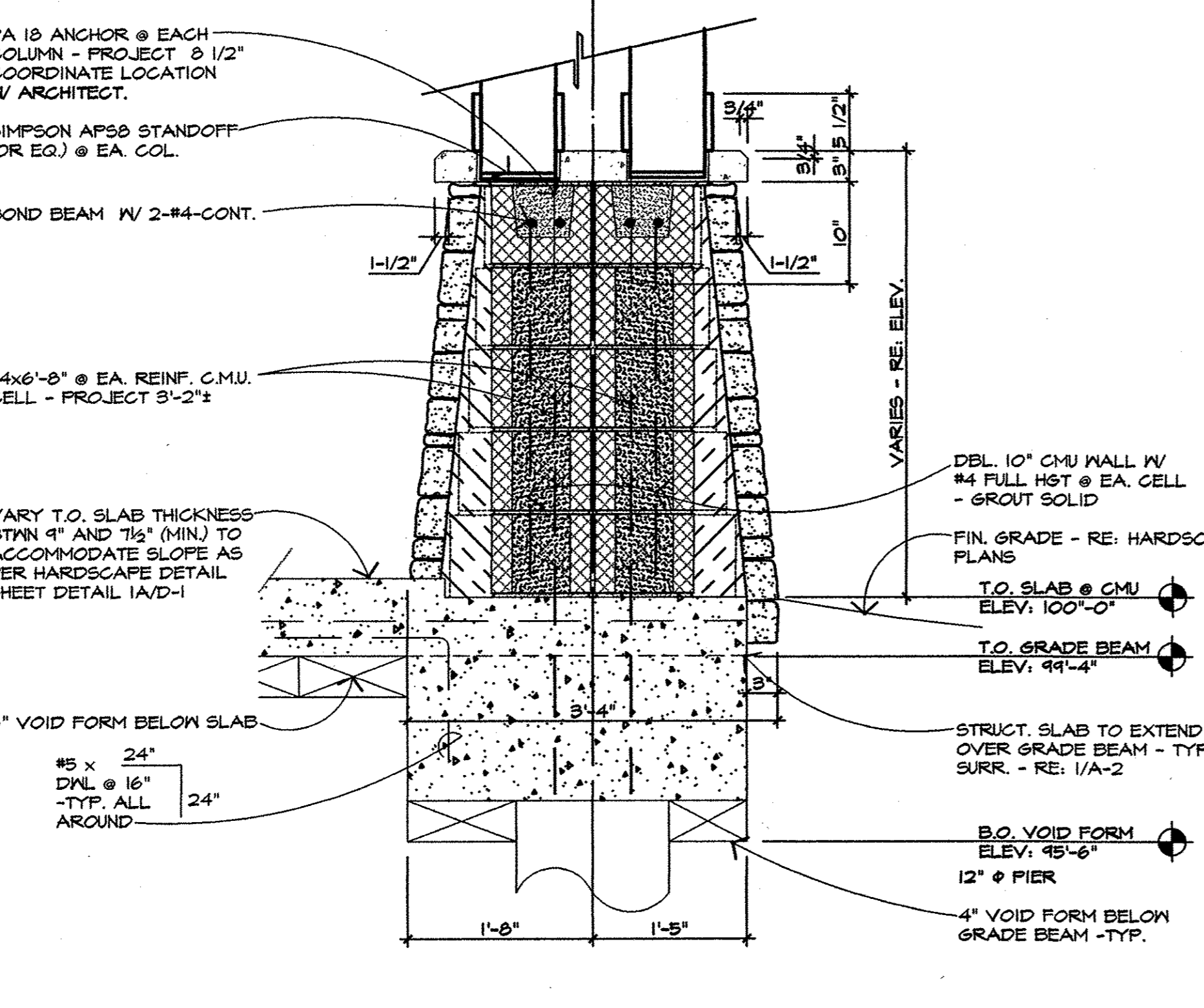
1 GRADE BEAM & STRUCT. SLAB PLAN
1/4" x 1'-0"
NOTE: REFER TO GENERAL STRUCTURAL NOTES 11/A-2 FOR ADD'L INFO



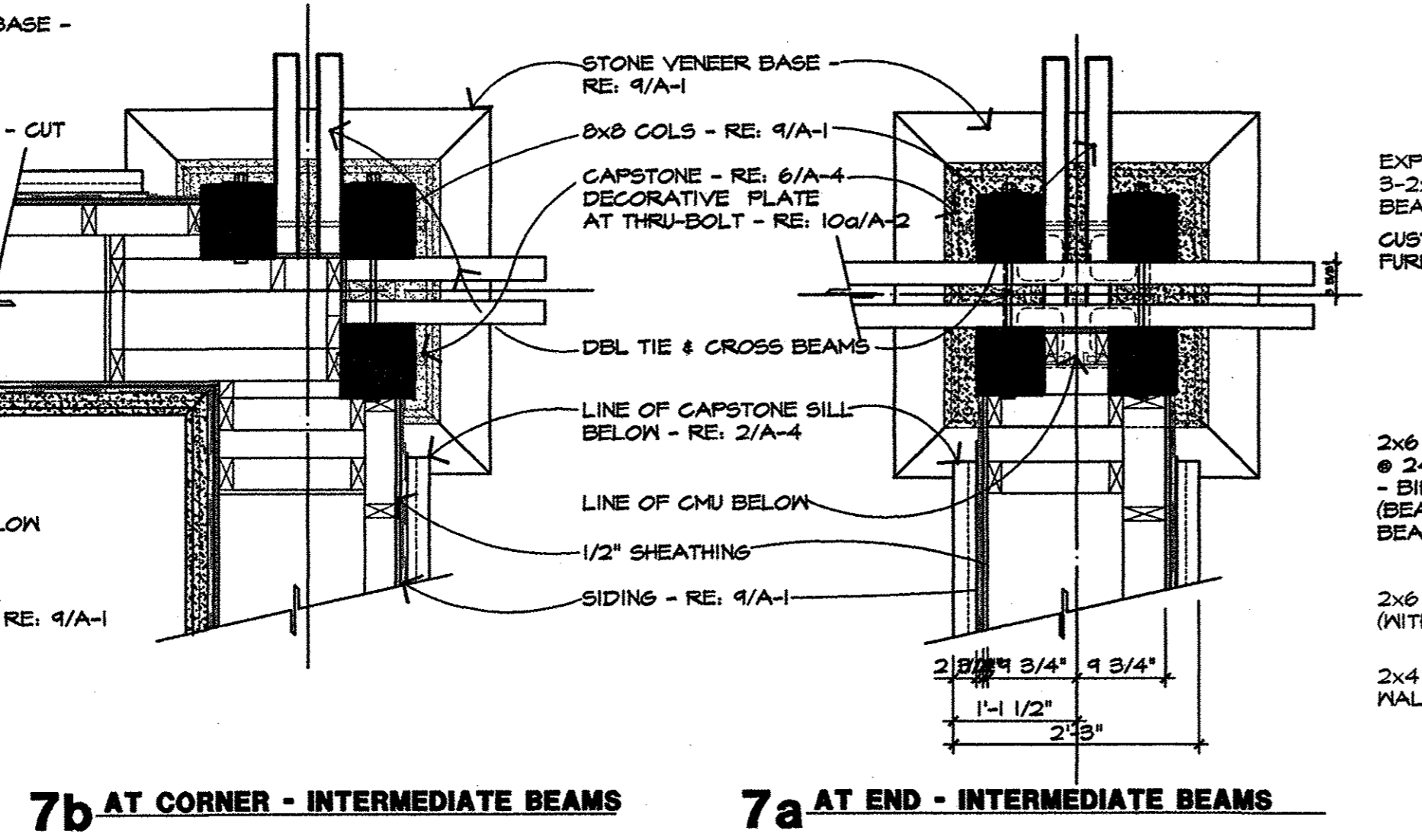
10 RIDGE DETAIL
1 1/2" x 1'-0"
RE: 6/A-2 FOR TYP. CALLOUTS



9 EAVE DETAIL
1-1/2" x 1'-0"
RE: 5/A-2 FOR TYP. CALLOUTS



8 CORNER PIER DETAIL
1' x 1'-0"
NOTE: REFER TO GENERAL STRUCTURAL NOTES 11/A-2 FOR ADD'L INFO



7 END AND CORNER FRAMING DETAILS
1-1/2" x 1'-0"
NOTE: REFER TO GENERAL STRUCTURAL NOTES 11/A-2 FOR ADD'L INFO
NOTE: FOR ALL FINISH & MATERIALS INFORMATION RE: SCHEDULE 9/A-1 - TYP.

3 ROOF FRAMING PLAN
1/4" x 1'-0"
NOTE: REFER TO GENERAL STRUCTURAL NOTES 11/A-2 FOR ADD'L INFO

7c AT END - MASONRY PIER

7b AT CORNER - INTERMEDIATE BEAMS

7a AT END - INTERMEDIATE BEAMS

7 END AND CORNER FRAMING DETAILS
1-1/2" x 1'-0"

3 ROOF FRAMING PLAN
1/4" x 1'-0"