



**DOWNING  
THORPE  
JAMES**

ARCHITECTURE  
PLANNING  
LANDSCAPE ARCHITECTURE  
ENGINEERING  
1881 Ninth Street, Suite 103  
Boulder, Colorado 80302  
303-443-7533

HIGHLANDS RANCH

**GOLF CLUB**



SCALE: 1"=30'  
DRAWN BY: PS  
CHECKED BY: MAB  
PROJECT NUMBER: 97098.41  
ISSUE DATE: April 21, 1998  
REVISIONS: June 4, 1998  
July 24, 1998  
August 26, 1998

SHEET TITLE:  
LAYOUT PLAN

SHEET NUMBER:

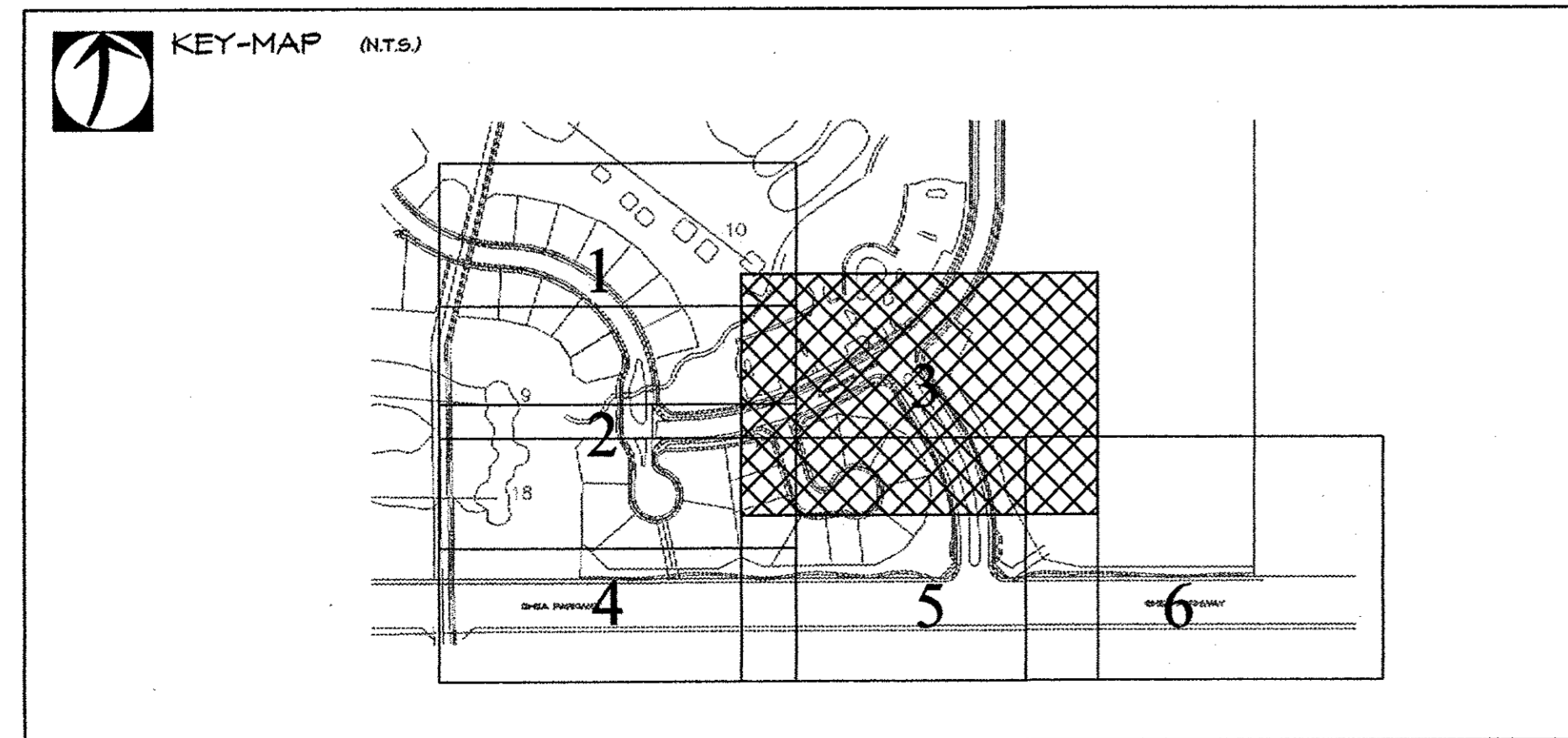
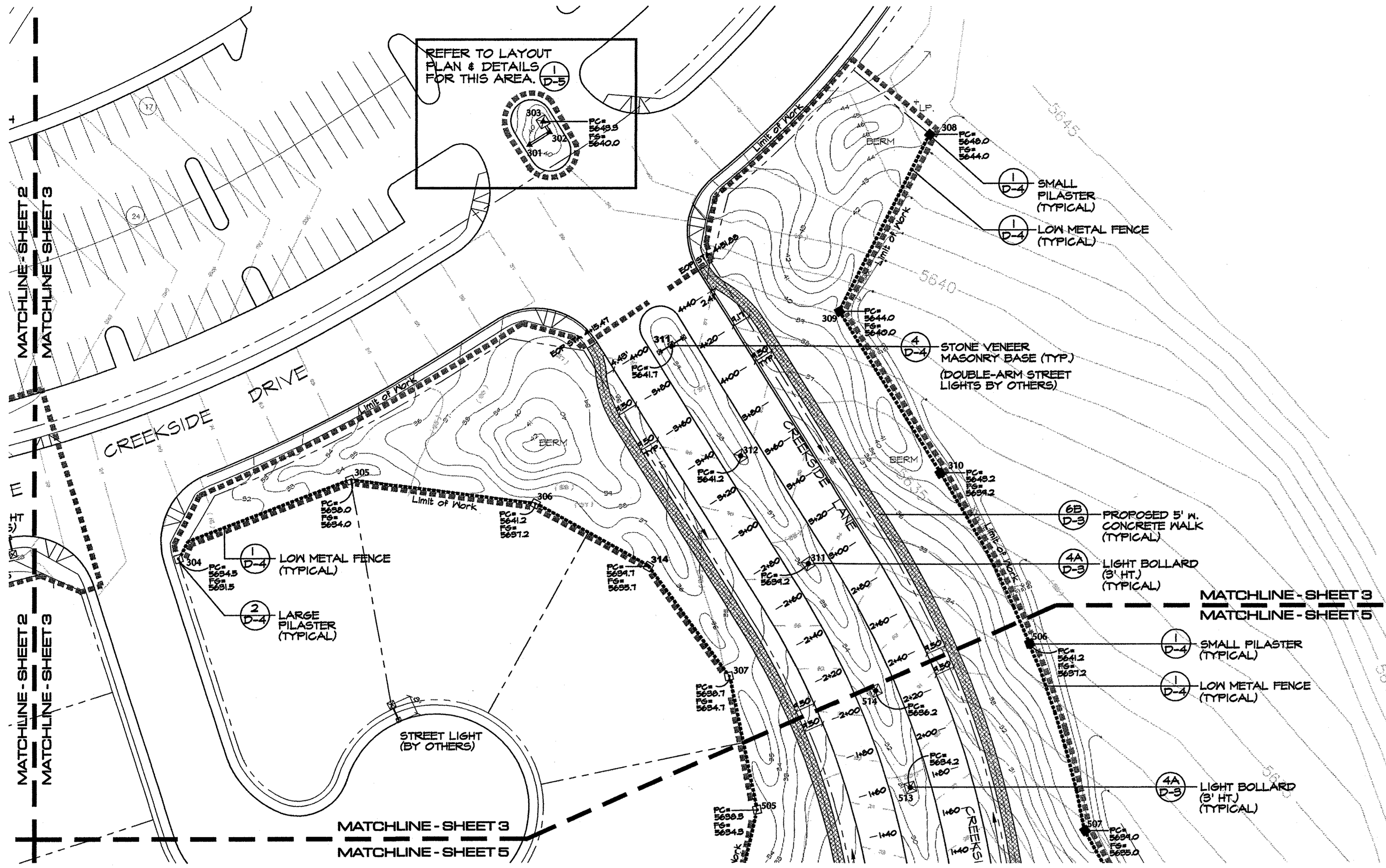
LG - 3

**LEGEND**

- 13 — PROPOSED CONTOURS (10.1) (TYP.)
- 10 — PROPOSED CONTOURS (8.1) (TYP.)
- 15 — EXISTING CONTOURS (10.1) (TYP.)
- 10 — EXISTING CONTOURS (8.1) (TYP.)
- - - R.O.W. LINE
- ==== MASONRY WALLS
- 6A — PROPOSED 5' W. CONCRETE CART PATH (6A) (D-3)
- 6B — PROPOSED 5' W. CONCRETE SIDEWALK (6B) (D-3)
- — LIMIT OF WORK LINE
- — METAL FENCE (1) (D-4)
- LARGE PILASTER (2) (D-4)
- SMALL PILASTER (1) (D-4)
- ⊗ LIGHT BOLLARD (3' HT.) (4A) (D-3)
- ⊠ LIGHT BOLLARD (4' HT.) (4B) (D-3)
- ⊞ STONE VENEER MASONRY BASE (4) (D-4) (DOUBLE-ARM STREET LIGHT BY OTHERS)
- 217 NODE LOCATION

**ADD/ALTERNATE**

- 227 DRILLED PIER LOCATION



**NODE INFORMATION**

Node #	Northing	Easting	Description
304	626348.52	136902.30	S.PILASTER
305	626386.85	136985.64	S.PILASTER
306	626375.06	137075.22	S.PILASTER
307	626291.58	137169.05	S.PILASTER
308	626553.91	137266.38	L.PILASTER
309	626468.48	137222.64	L.PILASTER
310	626390.20	137271.40	L.PILASTER
311	626346.05	137207.48	LBOLLARD
312	626398.40	137174.73	LBOLLARD
313	626451.98	137141.20	LTBASE
314	626344.58	137130.07	L.PILASTER

**ADD/ALTERNATE:  
PIER INFORMATION**

Node #	Northing	Easting	Description
301	626549.29	137072.65	DRILLPIER
302	626555.13	137082.01	DRILLPIER
303	626560.23	137078.85	DRILLPIER
313	626451.98	137141.20	LTBASE

BID DOCUMENTS

**CALL UNCC**  
TWO WORKING DAYS  
**BEFORE YOU DIG**  
1-800-922-1987  
534-6700 METRO DENVER AREA  
UTILITY NOTIFICATION CENTER OF COLORADO

